

# OxyGuard® Pacific



Complete Process Control System for Aquaculture



for Small Systems



for Large Systems



for Sea Cages



for Fish Transport

OxyGuard®





# Pacific for Small Systems

Pacific is a measuring, monitoring and control system designed for use in fish farms.



Up to 20 probes:  
Wired  
Wireless

P-NET  
TCP/Modbus  
TCP/IP  
USB  
etc.

Combination of  
relays and digital  
inputs/outputs  
(up to 30 of each)

Built-in data logger  
Touch screen

It is both multi-channel and multi-parameter, and forms a modular small size complete system. A member of the Commander series of equipment, it can be used both as a stand-alone system or as a part of a larger Commander Pacific system.

## Other components for more functionality



- 4 probes
- 6 on/off inputs and/or outputs
- 6 output relays

- 8 on/off signals (either inputs, outputs or a combination)

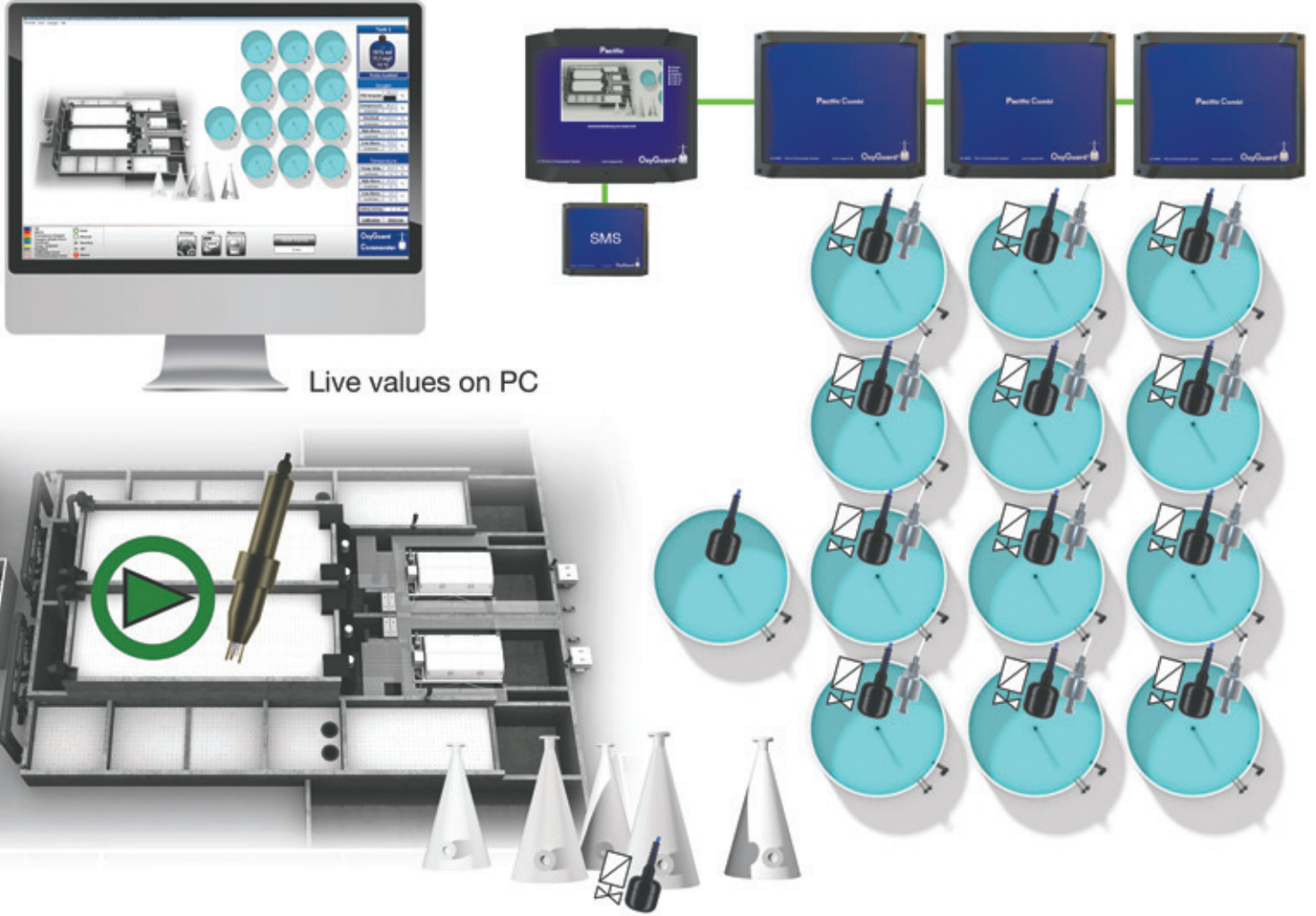
- Wired probes: DO, temperature, pH, redox (ORP), salinity, CO2 and TGP

- 8 analogue inputs for active and passive devices such as sensors, flow meters, etc.

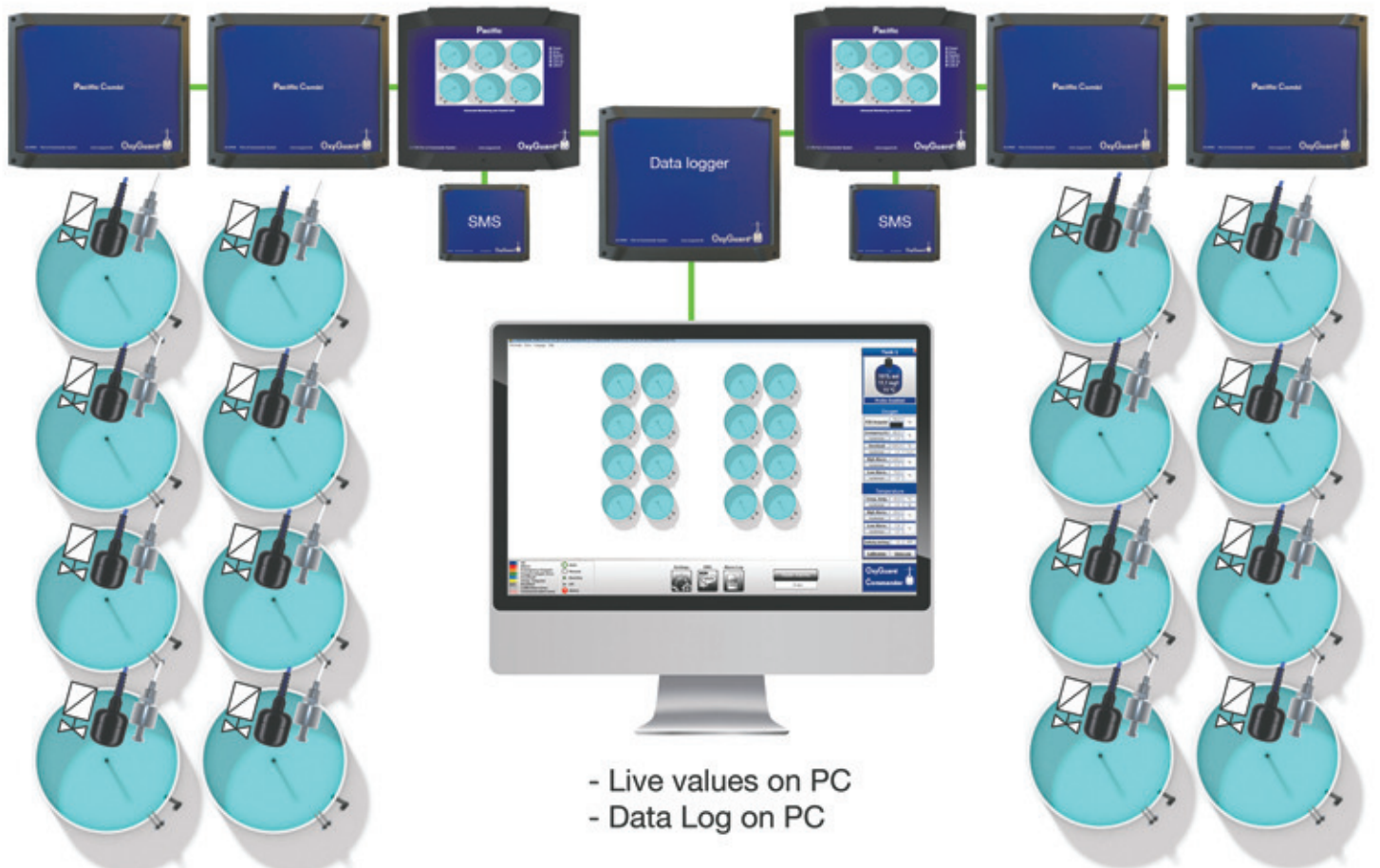


# Complete system with software and SMS

Combi Units with temperature probes, water level sensors and valves



# 2 independent Pacific systems with the same software







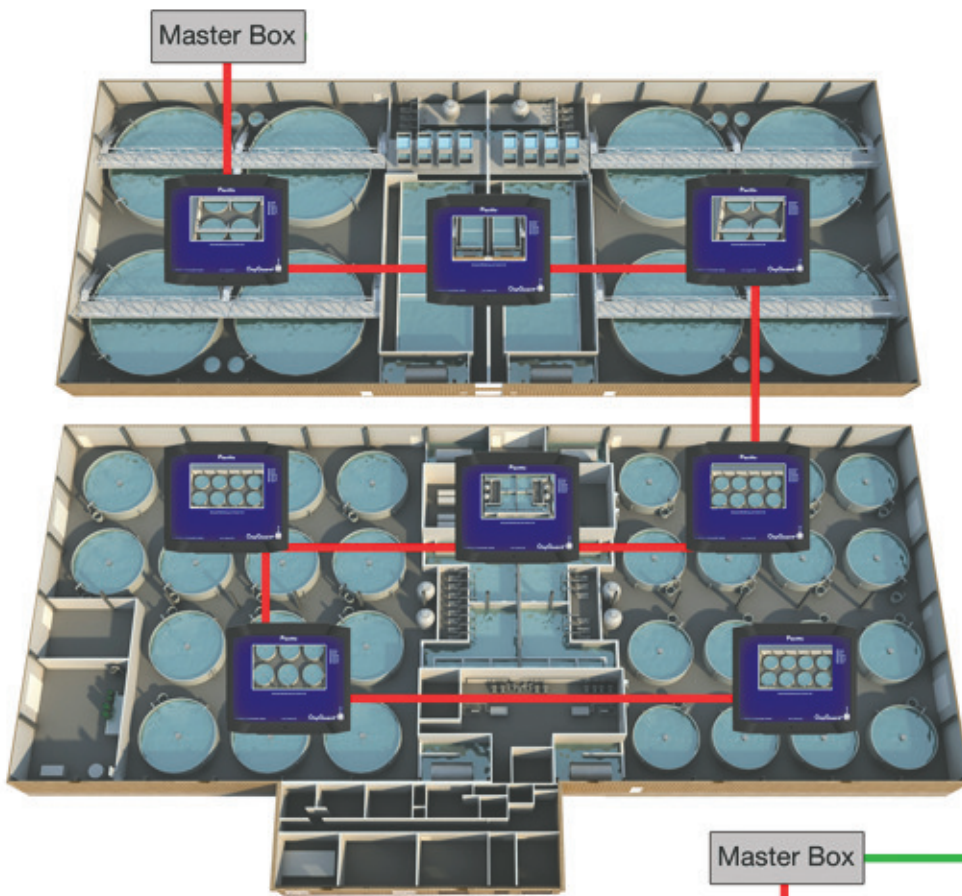
## Pacific for Large Systems / Commander Pacific

Commander Pacific systems are process control systems that can be made to any practical size and can monitor and control everything on the fish farm!



Dissolved oxygen - Temperature - pH - CO2 - Level - Filters - Feed Machines - Pumps - Lighting - Alarms - Data Logging, etc.

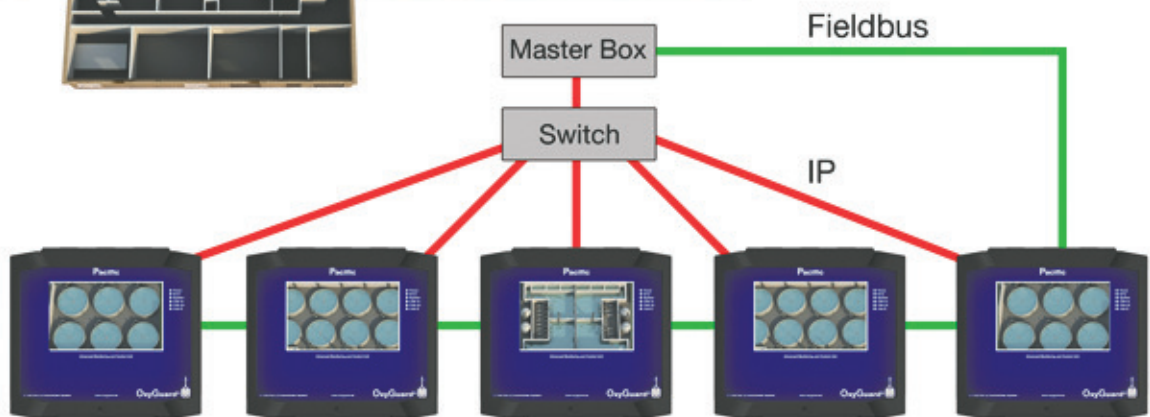
Commander Pacific is formed by combining small Pacific systems into one big system.



Local indication provides total control of the designated area

- You can :
- Assign set points
  - Calibrate
  - Monitor and control

A log-in function makes it possible to control data access



Fieldbus and IP give you two separate networks to guarantee that you will always stay connected!

# Commander Software



**Total Overview**  
Your whole system appears on the screen of your PC. A colour code shows you what's happening. Red indicates that there is an alarm. It takes you less than a second to check your entire farm!



**Total Control**  
You can zoom in on any part of your farm to see full details of every measurement, pump, valve, etc. and keep full overview while you do so!

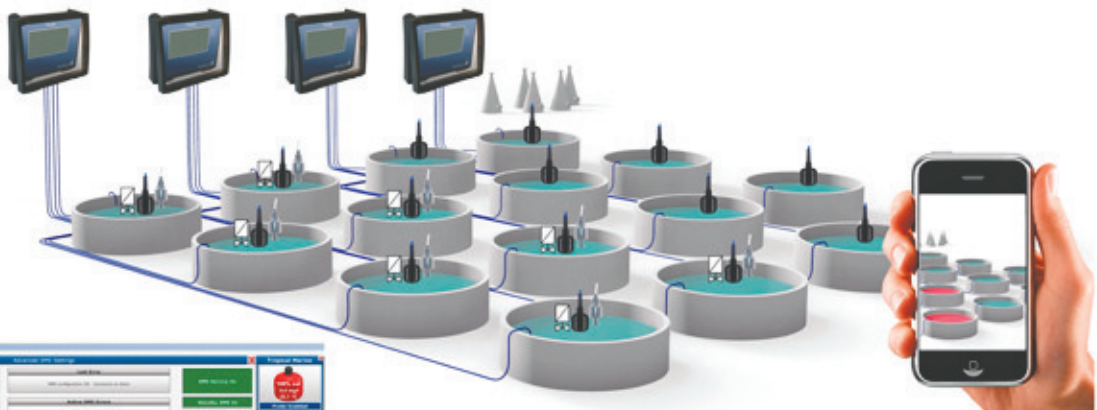


-  OK
-  Alarm
-  Warning
-  Oxygen Dose
-  Manual
-  Disabled
-  Calibration Error
-  Communication Error

The colour code is very comprehensive. You will know exactly what is happening within seconds.



## Get alarm notifications **ON THE GO!**

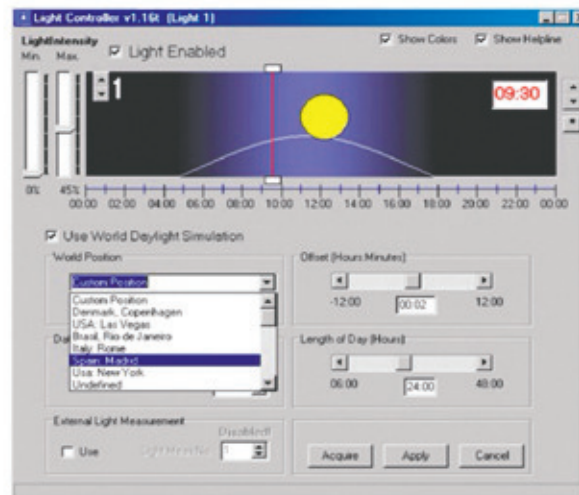
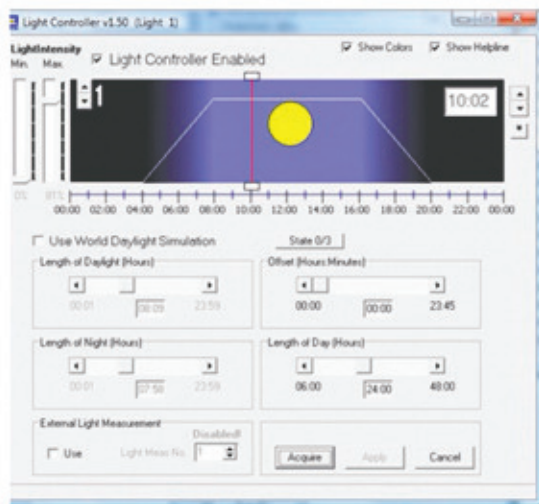


You can get alarm notifications via text message (SMS) and "communicate" with your system by responding to it!

The Alarm Log keeps a record of the alarms

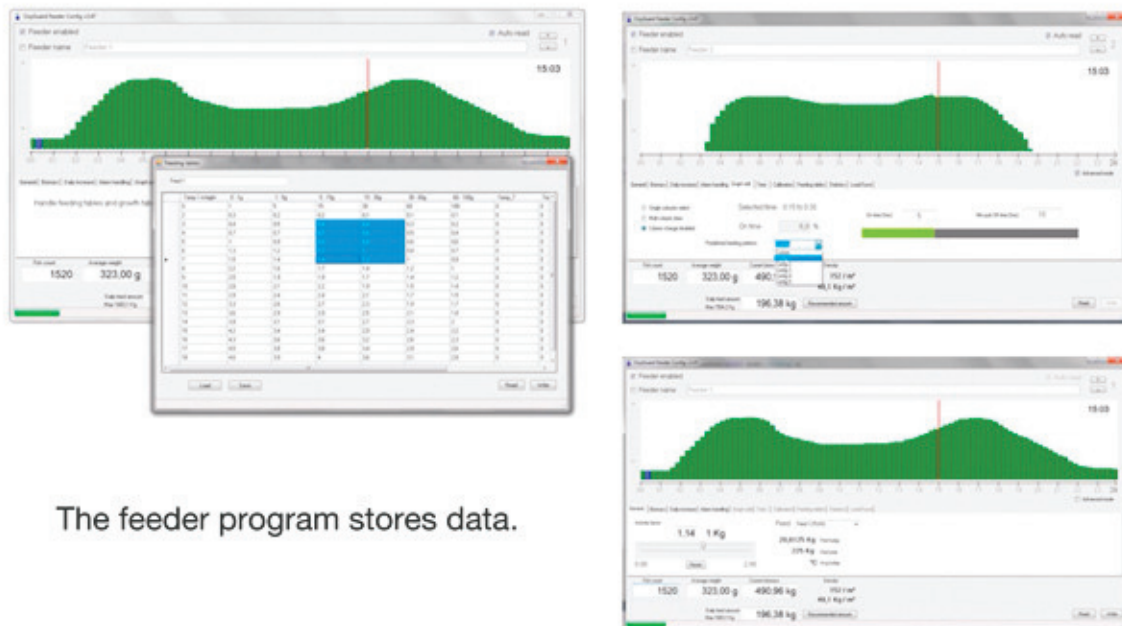


With Commander Pacific you can simulate daylight anywhere!



Commander has an artificial daylight program. This can control fluorescent or LED lamps with analogue or DALI signals.

The Commander Pacific daylight program is also a feeder control program!



The feeder program stores data.



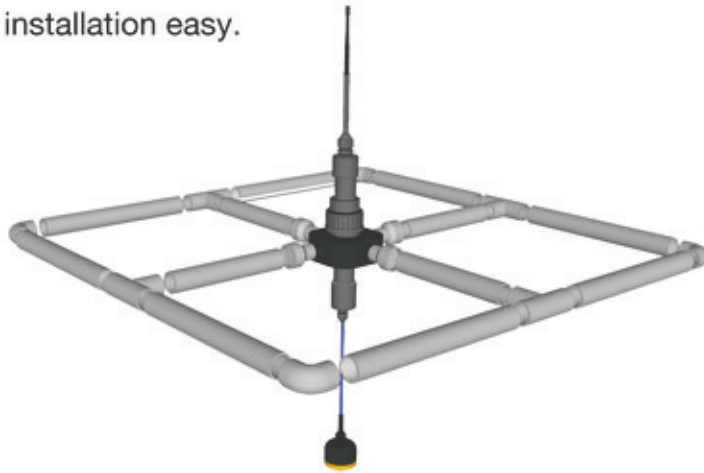
3.

## Pacific for Sea Cages and Pens

Wireless probes make installation easy.



Antifouling cap - for keeping the probe membrane clean



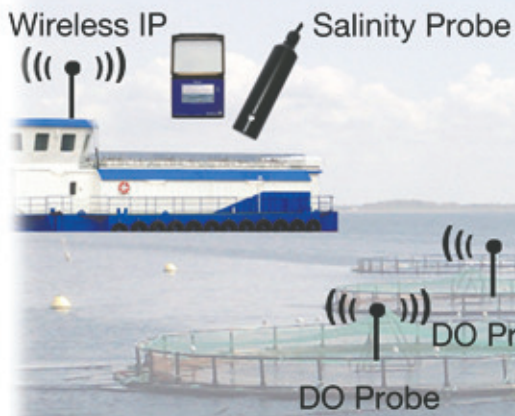
Floating probe



Fixed mounted probe

Remote access to the Pacific Main Unit on the feed barge is possible using wireless LAN or a wireless Internet connection.

Pacific Main Unit



One system can have up to 20 probes.  
Wireless probes can be placed 100 meters from each other.







4.

## Pacific for Fish Transport / Convoy Pacific

Convoy Pacific is the system for transporting live fish.  
It can be used for both vehicles and boats.

The Pacific Main Unit can be placed in the cabin or under the tanks, depending on your needs.  
If the Main Unit is placed under the tanks - you can use a tablet in the cabin.



Transported fish are worth a lot of money - Convoy Pacific can safeguard this!

